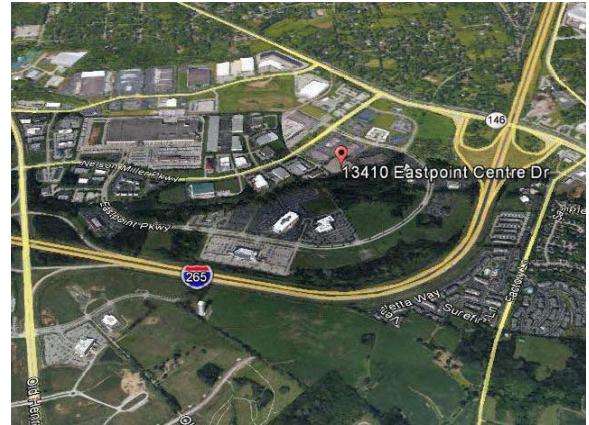


Eastpoint Centre

13410 Eastpoint Centre Drive, Louisville, Kentucky

AVAILABLE



- ◆ Approximately 11,300 RSF Available Under Construction
- ◆ One-Story, Class “A” Office Building
- ◆ No Additional Occupational Tax
- ◆ Corporate Headquarters Location
- ◆ Close to Retail, Services, and Restaurants
- ◆ Abundant Parking
- ◆ Prime East End Location
- ◆ Park Setting with Deck / Walking Trail



THE SCHROERING COMPANY

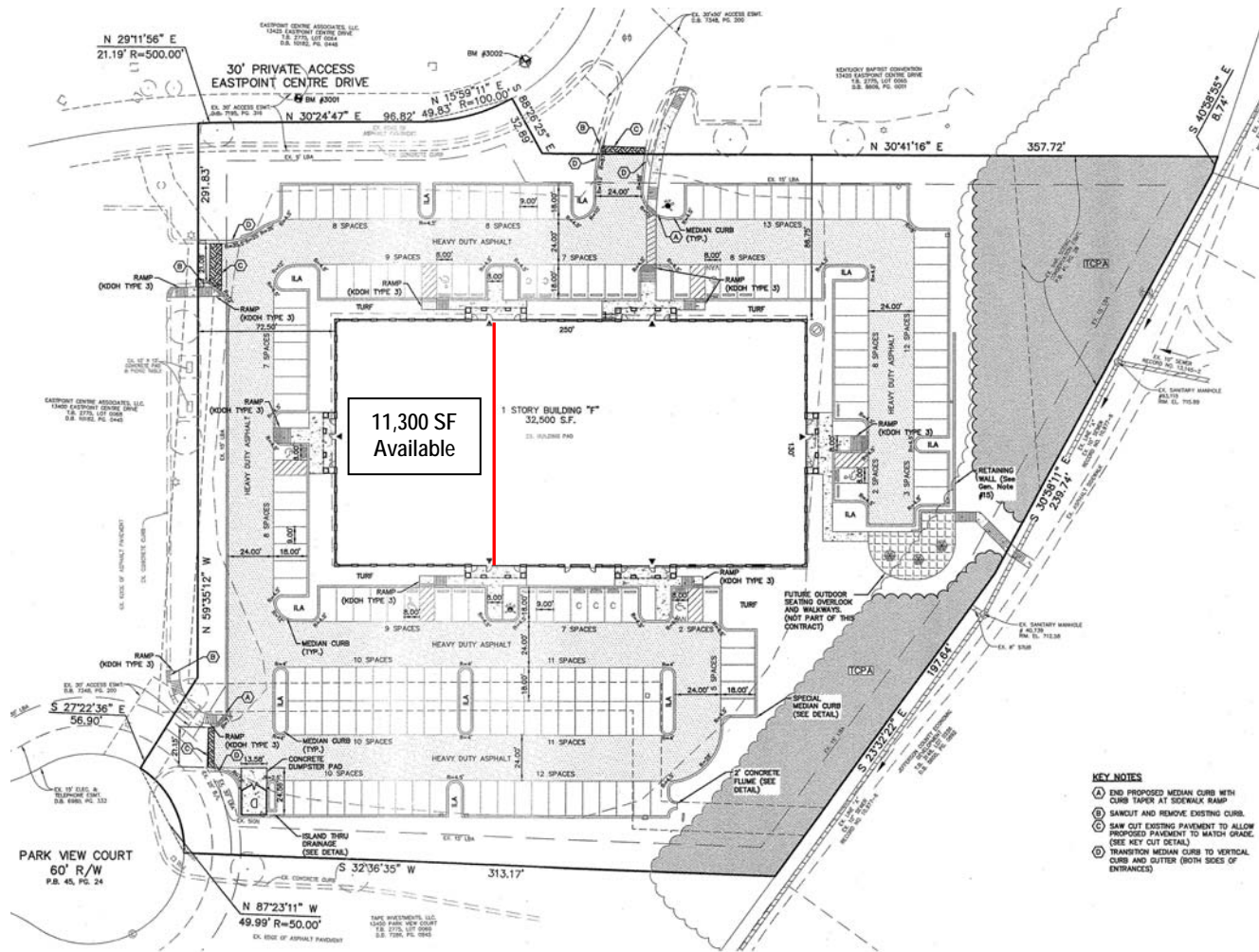
Michael Schroering, SIOR, CCIM

13405 Eastpoint Centre Drive, Suite 125
Louisville, KY 40223
(502) 253-4000 Office / (502) 639-8224 Cell
michael@schroering.com
www.schroering.com

Eastpoint Centre

13410 Eastpoint Centre Drive, Louisville, Kentucky

SITE PLAN



Michael Schroering, SIOR, CCIM
 13405 Eastpoint Centre Drive, Suite 125
 Louisville, KY 40223
 (502) 253-4000 Office / (502) 639-8224 Cell
 michael@schroering.com
 www.schroering.com



THE SCHROERING COMPANY